



biologics

product catalog



BIOHORIZONS®
SCIENCE • INNOVATION • SERVICE

BIOHORIZONS®



a global leader for biologic-based solutions

BioHorizons commitment to science, innovation and service has helped us become one of the fastest-growing companies in the dental industry.



highest quality standards

BioHorizons partners with national tissue banks who take extraordinary measures to ensure the recovery and processing of all tissue meets or exceeds the guidelines set forth by the AATB and FDA.



clinically proven

BioHorizons is committed to developing evidence-based and scientifically proven products. With over 300 publications, our comprehensive biologics product portfolio has proven results for a wide range of soft and hard tissue applications.



novel solutions

BioHorizons has a history of identifying and developing game-changing products to enhance practices' clinical outcomes. This commitment started in 2000 when BioHorizons introduced AlloDerm™, the first soft tissue augmentation product in the dental industry.



partner for success

BioHorizons understands the importance of providing excellent service. Our global network of professional representatives and our highly trained customer care support team are well-equipped to meet the needs of patients and clinicians.

table of contents

Biologic Device

IntraSpin® System	2
-------------------	---

Bone Grafting Options

MinerOss® Putty	3
MinerOss® Blend	4
MinerOss® Cancellous	5
MinerOss® Cortical	5
MinerOss® Block Allograft	6
Grafton® DBM	6
MinerOss® X	7
MinerOss® XP	8
Bone Grafting Applications	9

Regenerative Matrix

AlloDerm™ Regenerative Tissue Matrix (RTM)	10
AlloDerm GBR™ Regenerative Tissue Matrix (RTM)	11
Soft Tissue Augmentation Applications	11

Resorbable Wound Dressings

BioPlug	12
BioStrip	12
Resorbable Wound Dressing Applications	12

Dental Membranes

Mem-Lok® Resorbable Collagen Membrane (RCM)	13
Mem-Lok® Pliable	14
Mem-Lok® Pericardium	15
Cytoplast™ Titanium-Reinforced Dense PTFE Membrane	16-17
Cytoplast™ Dense PTFE Membrane	18
Dental Membrane Applications	18

Site Development Products

Cytoplast™ PTFE Sutures	19
Hu-Friedy® Sutures	20
Allen Oral Plastic Surgery Kit	21
Basic Hard Tissue Grafting Kit	22
Allen/Johnston Suture Removal Kit	23
Manual Tack Driver	23
AutoTac® System Kit & Reorder Items	23
Crestal-Lift-Control Basic Kit	23
Bone Fixation Screw Kit & Reorder Items	24
Ordering, Warranty Information & References	25

IntraSpin® System

FDA-cleared & CE-marked medical device for the production of L-PRF®

The IntraSpin System is intended to be used for the safe and rapid preparation of autologous Leukocyte- and Platelet-Rich Fibrin (L-PRF) from a small sample of blood taken chairside. The IntraSpin System:

- offers high-quality German-engineering and manufacturing with a set of parameters for the proper consistencies of L-PRF
- features an optimized protocol that was scientifically developed and clinically proven from over 200 studies over 10+ years which ensures predictable results
- utilizes components that are FDA-cleared and CE-marked and have been optimized to ensure proper material biocompatibility and clinical performance
- includes a quality guarantee

"L-PRF, A human living tissue that challenges the paradigm of osseointegration and tissue regeneration. What we thought impossible yesterday, could be routine tomorrow with L-PRF and Natural Guided Regeneration-Therapy."

Nelson Pinto, DDS

ordering information

IntraSpin® Centrifuge:

ISS110 IntraSpin System, 110 volts

Includes centrifuge, Tissue Regeneration Kit and blood collection system



Blood Collection System:

455092 Red Cap 9ml Serum Clot Activator, pack of 50
455001 White Cap 9ml No Additive Blood Collection Tube, pack of 50
450160 Greiner Safety Blood Collection Set + Holder, 21G, box of 24
BAT Medical Tourniquet, latex free
450241 Holdex Single Use Holder, box of 100

Tissue Regeneration Kit:

BDTRK Tissue Regeneration Kit

CTR	Xpression Box
BSTF	Surgical Tissue Forceps
BSCS	Surgical Curved Scissors
BDBC	Dual Biomaterial Carrier Spatula
BDBP	Dual Biomaterial Packer
BSSMT	Round Stainless-Steel Bowl
BRSSMT	Rectangular Stainless-Steel Bowl

BRACK Test Tube Rack

A simple three-step processing protocol includes drawing blood, spinning blood and forming a thin, compressed layer of L-PRF in the Xpression® box.

BONE GRAFTING OPTIONS

MinerOss® family of allografts

MinerOss Putty

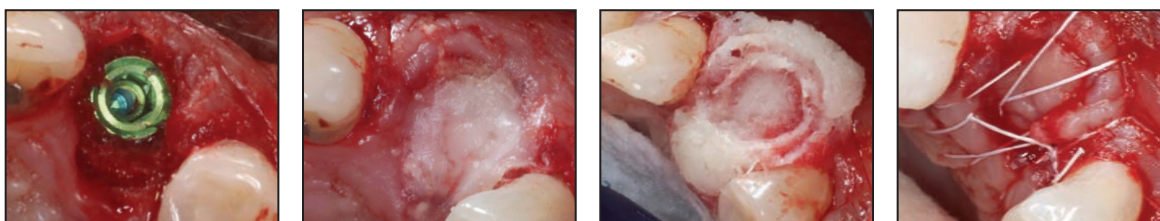
MinerOss Putty is uniquely a 100% allograft that includes a powerful combination of mineralized cortical/cancellous chips with demineralized cortical fibers for optimal implant site development. MinerOss Putty is designed for enhanced regenerative capacity.

- over 80% bone graft weight¹
- 50:50 ratio of mineralized cortical/cancellous chips and demineralized cortical fibers¹
- all-natural carrier with no extraneous fillers or binding agents
- moldable and cohesive handling characteristics
- time-saving delivery method with reliable clinical outcomes



applications include:

- ridge and sinus augmentation
- peri-implant defects
- extraction socket grafting
- periodontal defects



MinerOss Putty case images courtesy of Steve Wallace, DDS, MHS

ordering information

(100% pure allograft)

MIN-PT0.5 0.5cc Syringe

MIN-PT1.0 1.0cc Syringe

MIN-PT2.5 2.5cc Syringe

MIN-PT5.0 5.0cc Syringe

"MinerOss Putty has changed my perception of putty bone products. The handling characteristics are truly unique. I was impressed in how the putty easily molded and maintained its shape with such a high mineralized content. These features make it a good option for sockets, ridge augmentation and sinus graft procedures."

Craig Misch, DDS, MDS

BONE GRAFTING OPTIONS

MinerOss® family of allografts

MinerOss Blend

Our new packaging includes a low-profile jar with a wide opening that improves graft accessibility and hydration prior to graft placement. MinerOss Blend is now offered in two particulate size ranges to give you more options for your bone grafting procedures.

same great product, many reasons why

In 2004, BioHorizons pioneered the combination of mineralized cortical and cancellous chips. Today, MinerOss Blend is one of the most popular allograft blends in the USA. MinerOss Blend forms an osteoconductive scaffold for volume enhancement and effective site development to place dental implants.²

- mineralized cancellous chips with maximum surface area and early osteoconductive properties²
- mineralized cortical chips for space maintenance and long-term stability²
- 50:50 ratio of cortical and cancellous bone chips¹

applications include:

- extraction site grafting
- periodontal defects
- lateral and vertical ridge augmentation
- sinus grafting
- peri-implant defects
- composite grafting



ordering information

MinerOss Blend is now offered in two particulate size ranges to give you more options for your bone grafting procedures.

(Particle size range: 500-1000µm)

MIN-C0.5	0.5cc Jar
MIN-C1.0	1.0cc Jar
MIN-C2.5	2.5cc Jar

(Particle size range: 600-1250µm)

MIN-CC0.5	0.5cc Jar
MIN-CC1.0	1.0cc Jar
MIN-CC2.5	2.5cc Jar

BONE GRAFTING OPTIONS

MinerOss® family of allografts



applications include:

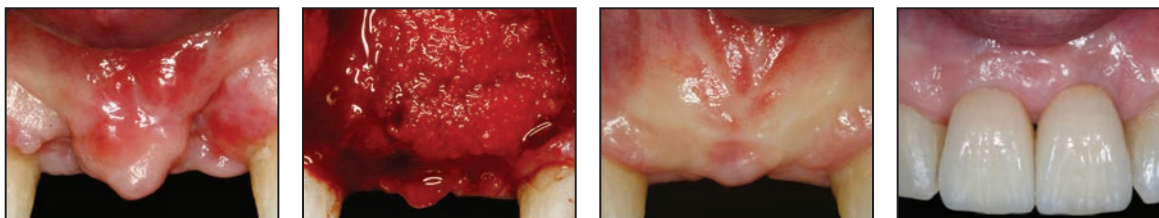
- ridge and sinus augmentation
- socket grafting
- periodontal defects
- grafting for implant placement

MinerOss Cancellous

MinerOss Cancellous is a mineralized allograft cancellous bone particle. The osteoconductive properties along with the fast remodeling time allow for rapid revascularization and predictable results.³ MinerOss Cancellous provides ideal handling characteristics for regeneration procedures of all sizes.

"MinerOss Cancellous is an outstanding choice for particulate grafting. Its exceptional handling and predictable results have proven to be an asset in my practice."

Bach Le, DDS, MD, FICD, FACD



MinerOss Cancellous case images courtesy of Bach Le, DDS, MD, FICD, FACD

MinerOss Cortical

The strength of a cortical allograft is ideal in procedures where structural integrity and long lasting stability is needed for proper regeneration.³ MinerOss Cortical is available in 300-1000 microns to allow for easy handling and fast hydration.

ordering information

MinerOss Cancellous

(Particle size range: 300-1000µm)

MIN-CAN0.5	0.5cc Jar
MIN-CAN1.0	1.0cc Jar
MIN-CAN2.5	2.5cc Jar

MinerOss Cortical

(Particle size range: 300-1000µm)

MIN-COR0.5	0.5cc Jar
MIN-COR1.0	1.0cc Jar
MIN-COR2.5	2.5cc Jar

MinerOss Cancellous Syringe

(Particle size range: 300-600µm)

MIN-CANSYR0.25	0.25cc Syringe
MIN-CANSYR0.5	0.5cc Syringe

BONE GRAFTING OPTIONS

MinerOss® family of allografts

MinerOss Block Allograft

MinerOss Block Allograft is pre-hydrated and ready for immediate implantation using patent-pending Aqueous Solution Preservation (ASP). MinerOss Block Allograft restores bone volume⁴ and provides an alternative to harvesting an autogenous block graft from the patient therefore eliminating the need for a second surgical procedure.

applications include:

- bone remodeling
- block grafting procedures
- bony defects

ordering information

MO-BLH10	15mm x 10mm x 10mm
MO-BLH15	15mm x 10mm x 15mm



Grafton® DBM

Grafton DBM incorporates potent DBF (demineralized bone fibers) technology to ensure superior osteoconductivity. With more than 20 years of clinical history, Grafton DBM gives you the ability to preserve bone height and width.⁵ Proven in published, peer reviewed clinical studies, Grafton DBM in multiple forms gives clinicians options for bone grafting applications.⁶

- indicated as a bone void filler, bone graft extender, and bone graft substitute⁷
- available in multiple forms to give the desired handling characteristics for multiple clinical indications

ordering information

Grafton DBM Matrix Plugs

GR-MTX-1	8mm x 8mm x 10mm Plugs
-----------------	------------------------

Grafton DBM Putty in a Syringe

GR-SYR.25-1	0.25cc Syringe
--------------------	----------------

Grafton DBM Putty in a Jar

GR-PT.5	0.5cc Jar
----------------	-----------

GR-PT1	1.0cc Jar
---------------	-----------

GR-PT2.5	2.5cc Jar
-----------------	-----------

Grafton DBM Flex Sheet

GR-FL1.5	1.5cm x 1.5cm Sheet
-----------------	---------------------



applications include:⁸

- extraction socket grafting
- ridge and sinus augmentation
- cystic defects
- craniofacial augmentation
- filling of periodontal defects

BONE GRAFTING OPTIONS

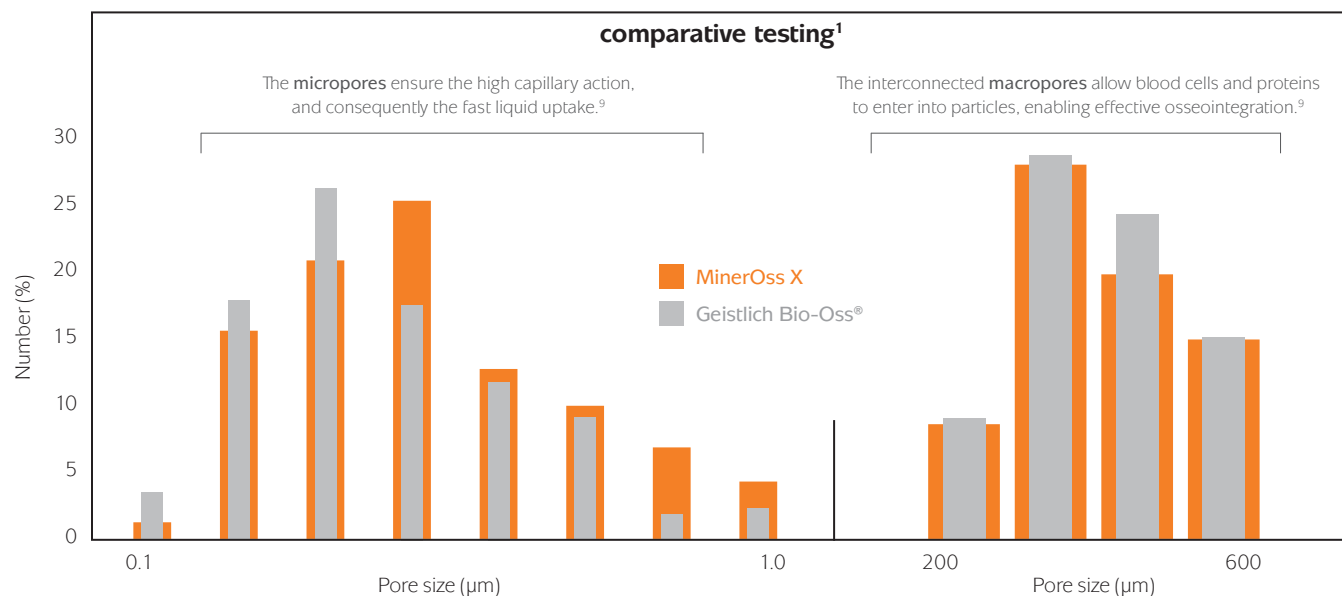
MinerOss® family of xenografts

MinerOss X

MinerOss X is an anorganic, bovine bone mineral matrix that is physically and chemically comparable to the mineral structure of human bone. The formation and ingrowth of new bone at the implantation site of MinerOss X is favored because of its trabecular architecture, interconnecting macro- and micropores and its natural consistency.

applications include:⁸

- ridge and sinus augmentation
- extraction socket grafting
- infrabony periodontal defects
- periodontal defects
- peri-implant defects
- dehiscence defects



ordering information

MinerOss X Cancellous

(Particle size ranges from 250-1000µm)

MINX-CAN0.25GR	0.25g/0.5cc
MINX-CAN0.5GR	0.5g/1.0cc
MINX-CAN1.0GR	1.0g/2.0cc
MINX-CAN2.0GR	2.0g/4.0cc

MinerOss X Collagen

(95% anorganic cancellous bone mineral and 5% highly purified Type I collagen)

MINX-COLLAGEN-SM	6x7x8mm
MINX-COLLAGEN-MED	8x9x9mm
MINX-COLLAGEN-LG	10x11x12mm

MinerOss X Cortical

(Particle size ranges from 500-1000µm)

MINX-COR0.25GR	0.25g/0.4cc
MINX-COR0.5GR	0.5g/0.8cc
MINX-COR1.0GR	1.0g/1.6cc
MINX-COR2.0GR	2.0g/3.2cc

MinerOss X Syringe

(Particle size ranges from 250-1000µm)

MINX-SYR0.25	0.25cc
MINX-SYR0.5	0.5cc

BONE GRAFTING OPTIONS

MinerOss® family of xenografts

MinerOss XP

Highly porous anorganic porcine bone mineral matrix designed for hard tissue grafting applications. Increased porosity allows for optimal osteoconductivity and adequate space for new bone deposition.

applications include⁸

- ridge and sinus augmentation
- extraction socket grafting
- infrabony periodontal defects
- periodontal defects
- peri-implant defects
- dehiscence defects



ordering information

MinerOss XP Cancellous

(Particle size ranges from 250-1000µm)

MINXP-CAN0.5SM 0.5cc Jar

MINXP-CAN1.0SM 1.0cc Jar

MINXP-CAN2.0SM 2.0cc Jar

MINXP-CAN4.0SM 4.0cc Jar

MinerOss XP Cancellous

(Particle size ranges from 1000-2000µm)

MINXP-CAN1.0LG 1.0cc Jar

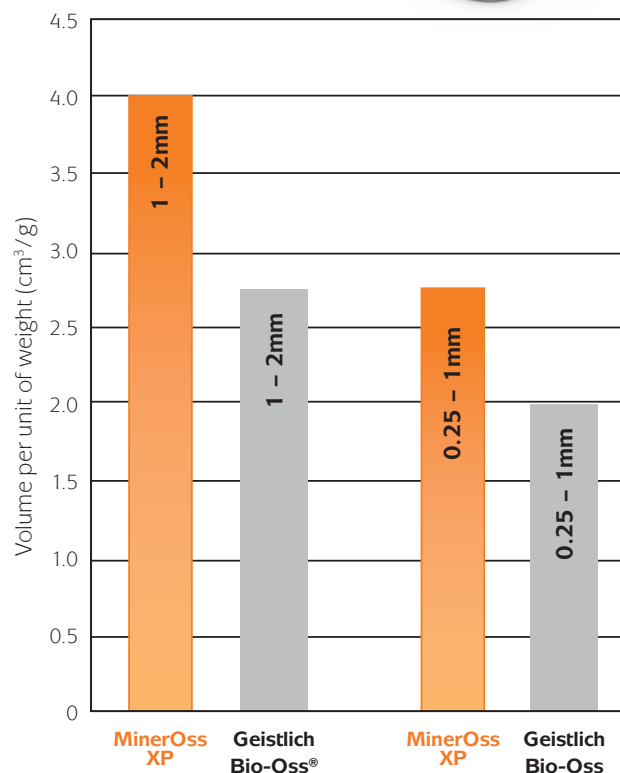
MINXP-CAN2.0LG 2.0cc Jar

MinerOss XP Syringe

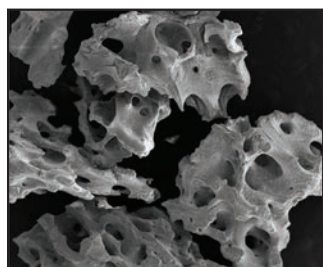
(Particle size ranges from 250-1000µm)

MINXP-SYR0.25 0.25cc Syringe

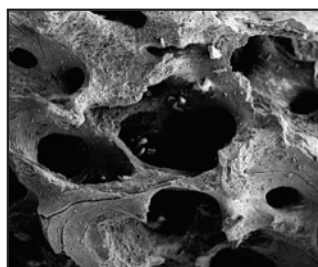
MINXP-SYR0.5 0.5cc Syringe



Of the compared materials, MinerOss XP provides more intra- and interparticle space for osteoconduction and formation of new bone.¹



SEM at 25x



SEM at 75x

SEM images of MinerOss XP illustrate a structure that is similar to a natural bone mineral and is highly porous to provide more space for new bone deposition and a rough surface which facilitates cell adhesion and spread for bone in-growth.¹

BONE GRAFTING OPTIONS

Bone Grafting Applications*

	periodontal defects	4-wall extraction sockets	3-wall extraction sockets	sinus augmentation	ridge augmentation	grafting for implant placement	peri-implant defects	dehiscence defects	block grafting
MinerOss® Putty	✓			✓	✓	✓			
MinerOss Blend	✓	✓	✓	✓	✓	✓			
MinerOss Cancellous	✓	✓	✓	✓	✓	✓			✓
MinerOss Cancellous Syringe	✓	✓				✓			
MinerOss Cortical			✓	✓	✓				
MinerOss Block Allograft									✓
Grafton® DBM Matrix Plug	✓	✓	✓	✓					
Grafton DBM Matrix Putty	✓	✓	✓	✓					
MinerOss X Cancellous	✓	✓	✓	✓	✓		✓	✓	✓
MinerOss X Cortical	✓	✓	✓	✓	✓		✓	✓	
MinerOss X Syringe	✓	✓	✓	✓	✓		✓	✓	✓
MinerOss X Collagen	✓	✓	✓	✓					
MinerOss XP Cancellous	✓	✓	✓	✓	✓		✓	✓	✓
MinerOss XP Syringe	✓	✓	✓	✓	✓		✓	✓	✓

* Note: Please refer to the official instructions for Use for description, indications, contraindications, warnings, precautions, and other important information.

SOFT TISSUE AUGMENTATION

AlloDerm™ Regenerative Tissue Matrix

AlloDerm Regenerative Tissue Matrix (RTM) is the leading ADM for soft tissue applications, providing clinicians and patients:



AlloDerm RTM processing maintains tissue integrity and supports tissue regeneration by allowing rapid revascularization, fibroblast repopulation and a minimal inflammatory response — ultimately being transformed into host tissue for a strong, natural repair (Thickness ranges from 0.9-1.6mm).^{13,14}

- most widely supported and published, peer-reviewed clinical evidence¹²
- reduced postoperative complications as shown in trials¹⁵
- randomized clinical trials indicated no statistical difference to connective tissue for recession coverage^{16,17}

applications include:⁸

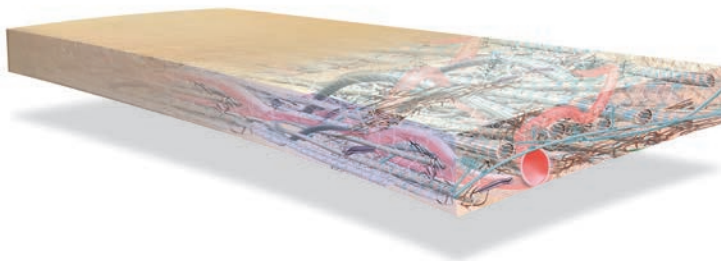
- root coverage
- gingival augmentation
- soft tissue augmentation around implants

ordering information

ALLODERM 1x1	AlloDerm RTM 1cm x 1cm
ALLODERM 1x2	AlloDerm RTM 1cm x 2cm
ALLODERM 1x4	AlloDerm RTM 1cm x 4cm
ALLODERM 2x4	AlloDerm RTM 2cm x 4cm

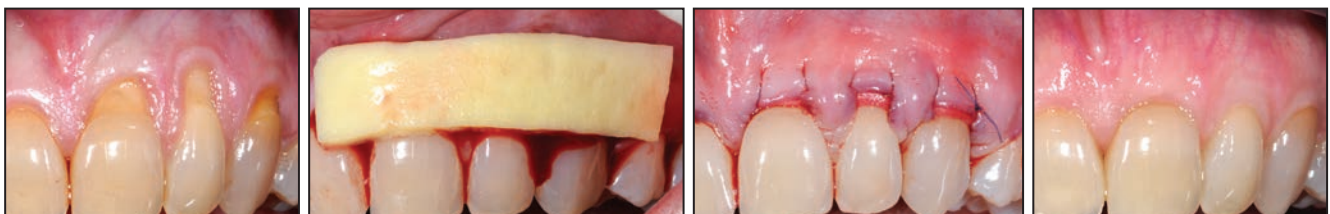


AlloDerm RTM can be stored at room temperature.⁸



Regenerative Tissue Matrix

Complex acellular heterogenous scaffold and blood vessel architecture; dehydrated and ready to implant



AlloDerm RTM case images courtesy of Edward P. Allen, DDS, PhD

SOFT TISSUE AUGMENTATION

AlloDerm GBR™ Regenerative Tissue Matrix

AlloDerm GBR Regenerative Tissue Matrix utilizes the same proprietary processing that maintains tissue integrity and supports tissue regeneration by allowing rapid revascularization, fibroblast repopulation and a minimal inflammatory response.^{13,14} AlloDerm GBR RTM is used as an effective barrier membrane that transitions into the patient's own tissue (Thickness ranges from 0.5-0.9mm).¹⁸

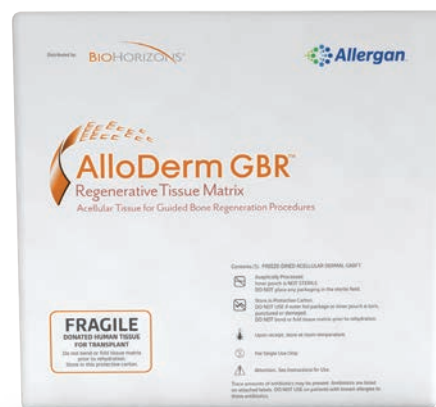
- benefits soft tissue quality and serves as a barrier membrane¹⁸
- less technique-sensitive because of its ability to be exposed during healing¹⁹
- demonstrated alternative to bioabsorbable membranes²⁰

applications include:⁸

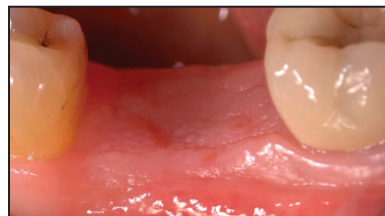
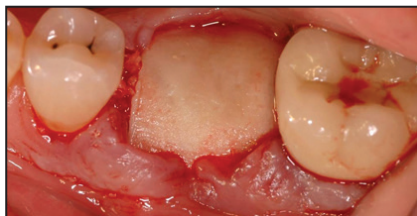
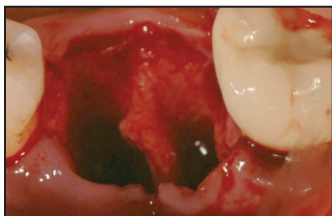
- graft protection and containment
- flap extender to achieve primary closure

ordering information

AL-GBR-1x1	AlloDerm GBR RTM 1 cm x 1 cm
AL-GBR-1x2	AlloDerm GBR RTM 1 cm x 2 cm
AL-GBR-1x4	AlloDerm GBR RTM 1 cm x 4 cm
AL-GBR-2x2	AlloDerm GBR RTM 2 cm x 2 cm
AL-GBR-2x4	AlloDerm GBR RTM 2 cm x 4 cm



AlloDerm GBR RTM can be stored at room temperature.⁸



AlloDerm GBR RTM case images courtesy of Lewis C. Cummings, DDS, MS

Soft Tissue Augmentation Applications

	root coverage	gingival augmentation	soft tissue augmentation around implants	soft tissue ridge augmentation	graft protection & containment	flap extender to achieve primary closure
AlloDerm Regenerative Tissue Matrix (RTM)	✓	✓	✓	✓		
AlloDerm GBR Regenerative Tissue Matrix (RTM)	✓				✓	✓

RESORBABLE WOUND DRESSINGS

BioPlug & BioStrip

BioPlug and BioStrip are wound dressings made from bovine collagen. They are designed to absorb blood or fluids and to protect the site for optimal regeneration.

- fully resorbed in 10-14 days
- quantity of 10 units per box
- packaged sterile

applications include:⁸

- extraction sockets
- denture sores
- oral ulcers
- periodontal surgical wounds
- burns
- surgical wounds
- traumatic wounds



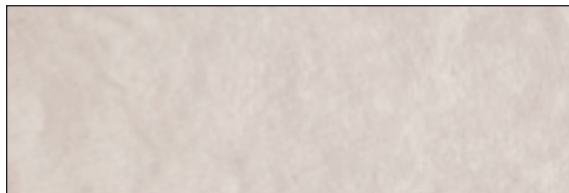
BioPlug



1cm x 2cm

BioPlug size reference

BioStrip



2.5cm x 7.5cm

BioStrip size reference

ordering information

BioPlug

BIOPLUG

Pack of 10

BioStrip

BIOSTRIP

Pack of 10

Mem-Lok® Resorbable Collagen Membrane (RCM)

Mem-Lok RCM is engineered from highly purified, Type I bovine collagen to provide a predictable resorption period and ensure optimal bone regeneration. Clinicians can be confident that Mem-Lok RCM will serve as an effective barrier membrane for bone regeneration. Mem-Lok RCM supports graft stabilization and bone growth by providing soft tissue support and space maintenance over a predictable time frame. Because of its *in-vivo* stability, it enables easy handling in demanding indications.

- predictable resorption period of 26–38 weeks²¹
- macromolecular pore size permeability that permits the exchange of essential nutrients during healing
- adapts easily to various bony defects²²
- membrane only 0.3mm thick, yet rigid²²
- easy placement since membrane is not side-specific²²
- cell-occlusive for supporting bone regeneration

applications include:⁸

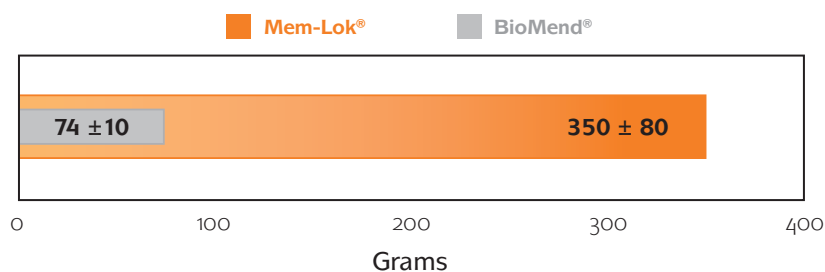
- extraction sockets
- ridge reconstruction
- bone augmentation around implants
- bony defects
- periodontal defects



ordering information

RCM-ML1520	Mem-Lok Resorbable Collagen Membrane	15mm x 20mm
RCM-ML2030	Mem-Lok Resorbable Collagen Membrane	20mm x 30mm
RCM-ML3040	Mem-Lok Resorbable Collagen Membrane	30mm x 40mm

Suture pull-out strength



Suture pull-out strength of the collagen membrane—dense fibers provide high mechanical strength.²³

DENTAL MEMBRANES

Mem-Lok® Pliable

Mem-Lok Pliable is a strong, conformable collagen barrier membrane. Manufactured from highly purified, intact porcine collagen and minimally cross-linked, it is biocompatible and predictably resorbable. It drapes easily for graft site contours and can easily be repositioned. Mem-Lok Pliable offers flexibility, strength and is easy to handle.

- cell occlusive¹
- predictable 12-16 week resorption time¹
- high suture pull-out strength¹
- easily repositionable for precise placement¹
- can be placed dry or hydrated¹

applications include:⁸

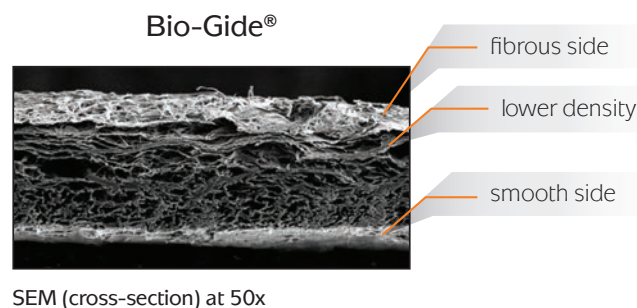
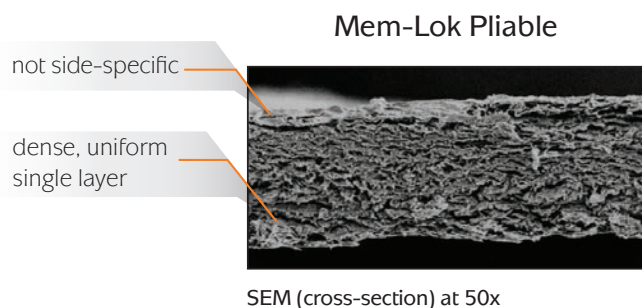
- extraction sites
- ridge reconstruction
- dehiscence defects
- periodontal defects



ordering information

PBLE-ML1520	Mem-Lok Pliable	15mm x 20mm
PBLE-ML2030	Mem-Lok Pliable	20mm x 30mm
PBLE-ML3040	Mem-Lok Pliable	30mm x 40mm

In preclinical testing, suture pullout strength was three times higher than a comparable collagen membrane.¹



DENTAL MEMBRANES

Mem-Lok® Pericardium

Mem-Lok Pericardium is a long lasting, conformable barrier membrane that drapes easily for graft site contours. It has excellent strength and stability for optimal graft site protection.

- tear-resistant, can be sutured²⁴
- 5-year shelf life¹
- can be stored at room temperature⁸

applications include⁸

- extraction sites
- periodontal defects
- block graft coverage
- ridge reconstruction

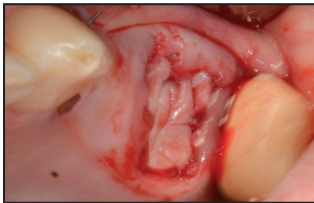
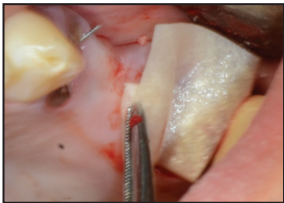
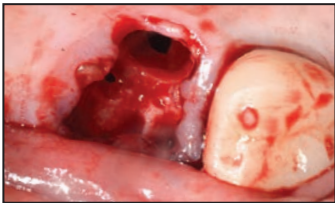


"The hydrated Mem-Lok Pericardium had excellent handling and adaptability to the graft site."

Guy Rosenstiel, DMD

ordering information

PERI-ML1520INT	Mem-Lok Pericardium	15mm x 20mm
PERI-ML2030INT	Mem-Lok Pericardium	20mm x 30mm
PERI-ML3040INT	Mem-Lok Pericardium	30mm x 40mm



Mem-Lok Pericardium case images courtesy of Guy Rosenstiel, DMD



15mm x 20mm



20mm x 30mm



30mm x 40mm

Mem-Lok RCM, Mem-Lok Pliable and Mem-Lok Pericardium size reference

Cytoplast™ Titanium-Reinforced Dense PTFE Membranes

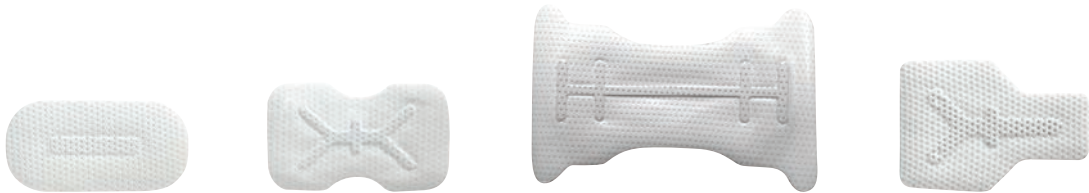
The traditional frame design, incorporating delicate and strategically-placed titanium "struts," has more than 25 years of clinical history and successful use in guided bone regeneration. Cytoplast Ti-250 membranes provide a wide range of coverage solutions for cases involving extraction sites, bony defects and ridge augmentation (250 microns thick).

- non-resorbable material allows the clinician to dictate healing time
- passive fit with no memory retention
- lightweight framework is easy to trim and is compliant with overlying soft tissues

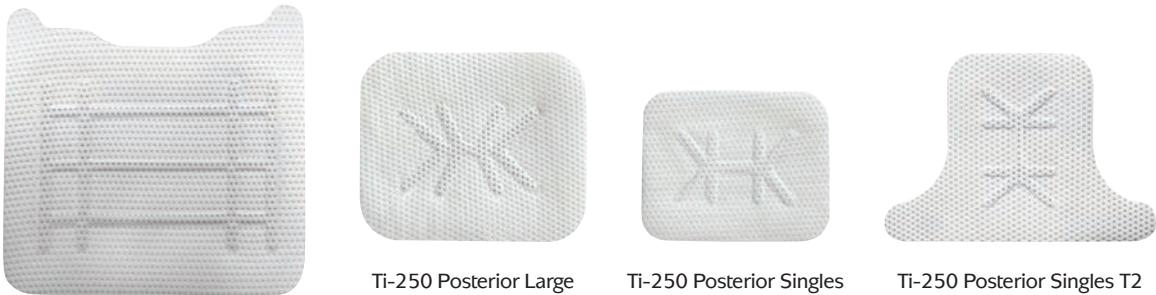
ordering information & applications⁸

OG-TI250ANL-2	Ti-250 Anterior Narrow (pack of 2)	12mm x 24mm
Coverage of narrow single-tooth extraction sites, especially where one bony wall is missing.		
OG-TI250AS-2	Ti-250 Anterior Singles (pack of 2)	14mm x 24mm
Coverage of single-tooth extraction sites, especially where one or more bony walls are missing.		
OG-TI250ATC-2	Ti-250 Anterior Trans Crestal (pack of 2)	24mm x 38mm
Designed for bony defects between adjacent teeth, including ridge augmentation.		
OG-TI250BL-2	Ti-250 Buccal (pack of 2)	17mm x 25mm
Treatment of large buccal defects.		
OG-TI250PD-2	Ti-250 Posterior Distal (pack of 2)	38mm x 38mm
Designed for large bony defects, including distal extension of the posterior ridge.		
OG-TI250PL-2	Ti-250 Posterior Large (pack of 2)	25mm x 30mm
Suited for treating large bony defects, including ridge augmentation.		
OG-TI250PS-2	Ti-250 Posterior Singles (pack of 2)	20mm x 25mm
Suited for covering posterior extraction sites and limited ridge augmentation.		
OG-TI250PST-2	Ti-250 Posterior Singles T2 (pack of 2)	25mm x 36mm
Designed for grafting extraction sites and limited ridge augmentation.		
OG-TI250PTC-2	Ti-250 Posterior Trans Crestal (pack of 2)	38mm x 38mm
Designed for large bony defects between adjacent teeth, including ridge augmentation.		
OG-TI250XL-2	Ti-250 XL (pack of 2)	30mm x 40mm
Sized to cover very large bony defects, including ridge augmentation. Larger titanium spans more of the PTFE membrane for additional rigidity.		
OG-TI250XLK-2	Ti-250 XLK (pack of 2)	30mm x 40mm
Sized to cover large bony defects, including ridge augmentation. Smaller titanium frame allows for greater versatility when shaping.		

Cytoplast™ Titanium-Reinforced Dense PTFE Membranes



Ti-250 Anterior Narrow 12mm x 24mm Ti-250 Anterior Singles 14mm x 24mm Ti-250 Anterior Trans Crestal 24mm x 38mm Ti-250 Buccal 17mm x 25mm



Ti-250 Posterior Distal 38mm x 38mm Ti-250 Posterior Large 25mm x 30mm Ti-250 Posterior Singles 20mm x 25mm Ti-250 Posterior Singles T2 25mm x 36mm



Ti-250 Posterior Trans Crestal 38mm x 38mm Ti-250 XL 30mm x 40mm Ti-250 XLK 30mm x 40mm

Cytoplast Titanium-Reinforced Dense PTFE
Membrane size reference

DENTAL MEMBRANES

Cytoplast™ Dense PTFE Membranes

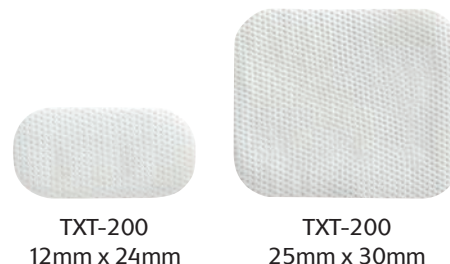
The micro-textured TXT-200 & TXT-200 Singles provide a textured surface to increase the area available for cellular attachment during dental bone grafting procedures (200 microns thick).

- patented Regentex™ surface for increased stability
- impervious to bacteria (membrane pore size less than 0.3 microns)
- designed to withstand exposure for easy, nonsurgical removal
- for socket grafting and grafting where primary closure is not possible



ordering information

OG-TXT1224-1	Cytoplast TXT-200 Singles 12mm x 24mm
OG-TXT1224	Cytoplast TXT-200 Singles (pack of 10) 12mm x 24mm
OG-TXT2530-1	Cytoplast TXT-200 25mm x 30mm
OG-TXT2530	Cytoplast TXT-200 (pack of 4) 25mm x 30mm



Cytoplast Dense PTFE
Membrane size reference

Dental Membrane Applications

	graft protection & containment	bone augmentation	periodontal defects	dehiscence defects	ridge preservation/ reconstruction	bony defects
Mem-Lok® RCM	✓	✓	✓		✓	✓
Mem-Lok Pliable	✓	✓	✓	✓	✓	✓
Mem-Lok Pericardium	✓		✓		✓	✓
Cytoplast TXT-200 & TXT-200 Singles	✓					
Cytoplast Ti-250	✓					

RECOMMENDED SUTURES

Cytoplast™ PTFE Sutures



- manufactured using 100% non-resorbable, medical grade PTFE for a biologically inert suture that prevents bacterial wicking into surgical sites
- 300 series stainless steel needle that provides a substantial increase in needle strength as well as initial and sustained needle sharpness.
- soft monofilament ensures little to no package memory for excellent handling, secure knots and increased patient comfort

16mm
3/8 Circle Precision Reverse Cutting
USP 4-0



OG-CS-0618RC

For dental implant and bone grafting procedures. Designed to have longer and geometrically finer precision cutting edges.

13mm
3/8 Circle Precision Reverse Cutting
USP 4-0



OG-CS-0618PREM

For dental implant and bone grafting procedures where a smaller reverse cutting needle is desired. Designed to have longer and geometrically finer precision cutting edges.

19mm
3/8 Circle Reverse Cutting
USP 3-0



OG-CS-051819

Most popular needle in dentistry and most popular suture size.

16mm
3/8 Circle Reverse Cutting
USP 3-0



OG-CS-0518

Most popular size for dental implant and bone-grafting procedures.

RECOMMENDED SUTURES

Hu-Friedy® Sutures



- 300 series stainless steel, the ideal alloy for dental suture needles, ensures a strong sharp needle pass after pass
- manufactured from a stronger alloy composition, increasing ductile strength — if the needle does bend, it is less likely to break when reshaping
- finer point geometry for smooth tissue penetration, requiring up to 20% less force* than other suture needles
- laser-drilled needles for reduced tissue disruption

Dr. Edward P. Allen's Recommended Sutures

For use in oral plastic surgery procedures



HF-PSN1816C

Perma Sharp® Suture

6-0 Chromic Gut 18", C-1 Premium.

Finer point geometry for smoother penetration.



HF-PSN8697P

Perma Sharp Suture

6-0 Polypropylene 18", C-1 Premium.

Finer point geometry for smoother penetration.



HF-PSN8696P

Perma Sharp Suture

7-0 Polypropylene 18", C-1 Premium.

This suture is used to secure coronally positioned flap / pouch over the graft.



HF-PSN8384P

Perma Sharp Suture

6-0 Polypropylene 18", C-17.

Finer point geometry for smoother penetration.

Dr. Carl E. Misch's Recommended Sutures

For use in implant and bone graft related procedures



HF-PSN460V

Perma Sharp Suture

3-0 Violet PGA Suture. 27", C-9.

Finer point geometry for smoother penetration.



HF-PSN392V

Perma Sharp Suture

4-0 Violet PGA Suture. 18", C-6.

Finer point geometry for smoother penetration.

*Data on file with Hu-Friedy

Allen Oral Plastic Surgery Kit



HF-ALLENKIT

Developed by Dr. Edward P. Allen, this comprehensive kit provides precision microsurgical instruments specifically designed for invasive soft tissue grafting procedures.

HF-IMN4160 16 Instrument Infinity Series Cassette

HF-IM1000 Sig. Series Hinged Instrument Clip, 2-pack

HF-NHM-5026R Micro Castroviejo, Straight, Diamond Dusted



HF-S5080 Goldman-Fox Perma Sharp® Scissors, Straight



HF-PPAELPX Allen Periosteal Elevator, Posterior, Black Line



HF-PPAELAX Allen Periosteal Elevator, Anterior, Black Line



HF-KPAX Allen End-Cutting Intracuticular Knife, Black Line



HF-SYG7/89E2 Younger-Good 7/8, #9 Handle, EverEdge® (2 per kit)



HF-MCUPE Immunity Steel Cup, Modified (2 per kit)



HF-KO12KPO3R9 Allen Modified Orban Knife 1/2, Round, EverEdge®



HF-SYRCW Cook-Waite Anesthetic Aspirating Syringe, 1.8ml



HF-10-130-05 #5 Scalpel Handle, Round, Straight



HF-PCP116 Color-Coded Probe 3-6-8-11



HF-SP20 Corn Suture Pliers



HF-8-905DD Precision Dressing Forceps, Diamond Dusted



HF-MIR5/3 #5 Front Surface Mouth Mirror, 3 pack

HF-MH6 #6 Satin Steel® Mirror Handle (2 per kit)



HF-PPAELX Allen Periosteal Elevator, Black Line



HF-ALLENCARD Allen Membrane Measurement Card



HF-KO12KP3R49 Allen Arrowhead Knife, EverEdge®



additional items available individually

HF-KO12KPO3AR Allen Modified Orban Knife 1/2, Round, #6 Satin Steel® Handle



Basic Hard Tissue Grafting Kit

HF-IMP MOODYK

Developed by Dr. Nico Geurs & Dr. Justin Moody, this comprehensive kit provides essential instrumentation for standard hard tissue grafting applications.



HF-CSEUWES6 Euwe Bone Scoop/Plugger, #6 Satin Steel® Handle



HF-IM8121C4 Gray Signa-Stat, 4 clips

HF-CL856 #85 Lucas DE Surgical Curette, #6 Satin Steel® Handle



HF-CRM Retractor University of Minnesota



HF-MIR5HD #5 High Definition Cone Socket Mirror, Single Sided (1 per kit)



HF-MH6 #6 Satin Steel® Mirror Handle



HF-P24GSP6 #24G Periosteal, #6 Satin Steel® Handle



HF-DP17 #17 Dressing Pliers



HF-NH5038 Crile-Wood Perma Sharp® Needle Holder



HF-F1XS #1 Atraumair Extraction Forceps



HF-PCP126 Color-Coded SE Probe 3-6-9-12, #6 Satin Steel® Handle



HF-S18 Iris Scissors, Curved



HF-CM116 #11 Miller Bone Curette, #6 Satin Steel® Handle



HF-10-130-05 #5 Scalpel Handle, Round Straight



INSTRUMENTS

Allen/Johnston Suture Removal Kit

HF-AJSRKIT

Dr. Edward P. Allen, a recognized expert in periodontal surgery, and Shanon Johnston, CDA, designed this complete suture removal kit. Microsurgery has recently been introduced into oral plastic surgery. Among the benefits are refined instruments and materials, which allow for finer, more precise surgical procedures that can result in predictable outcomes.



Titanium Tack Driver System

The titanium tack driver system is used for the fixation of barrier membranes and soft tissue in the oral cavity. The system was designed with a durable, long-lasting driver handle with a strong, tack-retaining feature to reduce lost tacks.

BSMTDR Manual Tack Driver



BSMTDRT Replacement Tack Driver Tip



AutoTac® System Kit

The AutoTac System Kit is used to secure membranes with the push of a button. The efficient "no touch" tack system with a convenient one-handed delivery mechanism effectively fixates membranes.

400-270 AutoTac System Kit includes:

- sterilization tray
- autoclavable tack cassette (preloaded with 21 titanium tacks)
- dressing pliers, utility pick-up
- delivery handle



Reorder Items

400-248 autoclavable tack cassette (tacks not included)

400-240 titanium tack vial (pack of 5)

400-260 titanium tacks with cassette (pack of 21)

HF-DPU17 dressing pliers, utility pick-up

Crestal-Lift-Control Basic Kit

The Crestal-Lift-Control system supports safe and easy access for internal sinus lift procedures.

MS-BCLBA2 Crestal-Lift-Control Basic Kit includes:

- 2.0 pilot drill for initial engagement of bone
- 3.3/3.6/3.8/4.1mm diameter side-cutting crestal drills
- 3mm-9mm depth stops for accurate access
- graft spreader to assist with sinus membrane elevation and placement of graft material



Bone Fixation Screw Kit

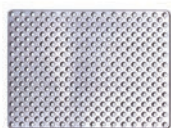
Indicated for use in fixation of cortical onlay grafts and meshes and for membrane tenting used in Guided Bone Regeneration. The kit is compact and conveniently organized for efficient retrieval of instruments and screws. It includes cortical bone drills for both latch-type and friction-grip handpieces.

160-900 Bone Fixation Screw Kit includes:

- flexible micro mesh
- screwdriver body
- comprehensive instrument set
- autoclavable screw block with lid
- 24 screws:
 - (6) 1.4mm x 8.0mm micro screws
 - (6) 1.4mm x 10.0mm micro screws
 - (6) 2.0mm x 10.0mm mini screws
 - (6) 2.0mm x 12.0mm mini screws



Bone Fixation Screw Kit Reorder Items



BSV-14X4

1.4mm x 4.0mm micro screw (pack of 6)

BSV-14X6

1.4mm x 6.0mm micro screw (pack of 6)

BSV-14X8

1.4mm x 8.0mm micro screw (pack of 6)

BSV-14X10

1.4mm x 10.0mm micro screw (pack of 6)

BSV-14X12

1.4mm x 12.0mm micro screw (pack of 6)

BSV-2X8

2.0mm x 8.0mm mini screw (pack of 6)

BSV-2X10

2.0mm x 10.0mm mini screw (pack of 6)

BSV-2X12

2.0mm x 12.0mm mini screw (pack of 6)

BSV-2X14

2.0mm x 14.0mm mini screw (pack of 6)

BS-MMESH

micro mesh for guided bone regeneration
24.0mm x 35.0mm, 0.1mm thick

BS-MCSSFT-HND

micro screwdriver shaft for screwdriver body

BS-MCSSFT-ANG

micro screwdriver shaft for latch-type handpieces

BS-1MCD-B-ANG

1.0mm micro drill bit for latch-type handpieces

BS-MNSSFT-HND

mini screwdriver shaft for screwdriver body

BS-MNSSFT-ANG

mini screwdriver shaft for latch-type handpieces

BS-16MMDB-ANG

1.6mm mini drill bit for latch-type handpieces

BS-16X54.8MDB-STR

1.6 x 54.8mm mini drill bit for friction-grip handpieces (Ø2.35mm)

BS-16X67MDB-STR

1.6 x 67.0mm mini drill bit for friction-grip handpieces (Ø2.35mm)

BS-SDRIVER

screwdriver body

ORDERING, WARRANTY INFORMATION & REFERENCES

Territory Manager: _____

cell phone: _____

email and/or fax: _____

BioHorizons Lifetime Warranty on Implants and Prosthetics: All BioHorizons implants and prosthetic components include a Lifetime Warranty. BioHorizons implant or prosthetic components will be replaced if removal of that product is due to failure (excluding normal wear to overdenture attachments).

Additional Warranties: BioHorizons warranties surgical drills, taps and other surgical and restorative instruments.

(1) Surgical Drills and Taps: Surgical drills and taps include a warranty period of ninety (90) days from the date of initial invoice. Surgical instruments should be replaced when they become worn, dull, corroded or in any way compromised. Surgical drills should be replaced after 12 to 20 osteotomies.²⁵

(2) Instruments: The BioHorizons manufactured instrument warranty extends for a period of one (1) year from the date of initial invoice. Instruments include drivers, implant site dilators and BioHorizons tools used in the placement or restoration of BioHorizons implants.

Return Policy: Product returns require a Return Authorization Form, which may be acquired by contacting Customer Care. The completed Return Authorization Form must be included with the returned product. For more information, please see the reverse side of the invoice that was shipped with the product.

Disclaimer of Liability: BioHorizons products may only be used in conjunction with the associated original components and instruments according to the Instructions for Use (IFU). Use of any non-BioHorizons products in conjunction with BioHorizons products will void any warranty or any other obligation, expressed or implied.

Treatment planning and clinical application of BioHorizons products are the responsibility of each individual clinician. BioHorizons strongly recommends completion of postgraduate dental implant education and adherence to the IFU that accompany each product. BioHorizons is not responsible for incidental or consequential damages or liability relating to use of our products alone or in combination with other products other than replacement or repair under our warranties.

Distributed Products: For information on the manufacturer's warranty of distributed products, please refer to their product packaging. Distributed products are subject to price change without notice.

Validity: Upon its release, this literature supersedes all previously published versions.

Availability: Not all products shown or described in this literature are available in all countries. BioHorizons continually strives to improve its products and therefore reserves the right to improve, modify, change specifications or discontinue products at any time.

Any images depicted in this literature are not to scale, nor are all products depicted. Product descriptions have been modified for presentation purposes. For complete product descriptions and additional information, visit store.biohorizons.com.

References

1. Data on file with the manufacturer.
2. Clinical and histologic outcomes after the use of a novel allograft for maxillary sinus augmentation: A case series. Avila G, Neiva R, Misch CE, Galindo-Moreno P, Benavides E, Rudek I, Wang HL. *Implant Dentistry*. 2010; Volume 19: 330-341.
3. The efficacy of mineralized allograft cortical and cancellous chips in maxillary sinus augmentations. Nevins M, Janke U, Rasperi G, Schubach P. *Int J Periodontics Restorative Dent*. 2014; 34:789-793.
4. Comparison of bone resorption rates after intraoral block bone and guided bone regeneration augmentation for the reconstruction of horizontally deficient maxillary alveolar ridges. Gultekin B, Bedeloglu E, Kose T, Mijiritsky E. *BioMed Research International*. 2016: Article ID 4987437
5. Histologic analysis of implant sites after grafting with demineralized bone matrix putty and sheets. Callan DP, Salked SL, Scarborough NL. *Implant Dent*. 2009;9(1):36-42.
6. Grafton DBM forms and Grafton Plus DBM Paste are FDA 510(k) cleared for use as a bone void filler, bone graft extender and bone graft substitute.
7. FDA 510(k) K051188 and K051195 Indications for Use statements and summaries of safety and effectiveness for use as a bone void filler, bone graft extender and bone graft substitute.
8. Reference manufacturer's Instructions for Use (IFU) package insert.
9. Porous hydroxyapatite for artificial bone applications. Sopyana I, Melb M, Rameshc S, Khalidd KA. *Science and Technology of Advanced Materials*. 8(2007): 116-123.
10. Relevant in vitro predictors of human acellular dermal matrix-associated inflammation and capsule formation in a nonhuman primate subcutaneous tissue expander model. Sandor M, Leamy P, Assan P, et al. *Eplasty*. 2017;17:e1-e21.
11. Host response to human acellular dermal matrix transplantation in a primate model abdominal wall repair. Xu H, Wan H, Sandor M, et al. *Tissue Eng Part A*. 2008;14(2):2009-2019.
12. Data on file, BioHorizons. Pubmed search performed March 2018: AlloDerm dental, AlloDerm dentistry, AlloDerm periodontal, Mucograft, Puros Dermis, Perioderm.
13. Host response to human acellular dermal matrix transplantation in a primate model abdominal wall repair. Xu H, Wan H, Sandor M, et al. *Tissue Eng Part A*. 2008;14(2):2009-2019.
14. Extracellular wound matrices: a novel regenerative tissue matrix (RTM) technology for connective tissue reconstruction. Harper JR, McQuillan DJ. *Wounds*. 2007;19(6):163-168.
15. Post-operative complications following gingival augmentation procedures. Griffin T, Cheung W, Zavaras A, Damoulis P. *J Periodontol*. December 2006.
16. Acellular dermal matrix for mucogingival surgery: a meta-analysis. Gapski R, Parks CA, Wang HL. *J Periodontol*. 2005 Nov;76(11):1814-22.
17. A 2-year follow-up of root coverage using subepidural acellular dermal matrix allografts and subepithelial connective tissue autografts. Hirsch A, Goldstein M, Goultschin J, Boyan BD, Schwartz Z. *J Periodontol*. 2005 Aug;76(8):1323-28.
18. Acellular dermal matrix graft as a membrane for guided bone regeneration: a case report. Novaes AB, Souza SL. *Implant Dent*. 2001;10(3):192-195.
19. Management of localized buccal dehiscence defect with allografts and acellular dermal matrix. Park, Sang-Hooh, Wang, Hom-Lay. *Int J Periodontics Restorative Dent*. 2006;(26):589-594.
20. Acellular dermal matrix as a barrier in guided bone regeneration: a clinical, radiographic and histomorphometric study in dogs. Borges GJ, Novaes AB Jr, de Moraes Grisi MF, Palioto DB, Taba M Jr, de Souza, S.L.S. *Clin Oral Impl Res*. 2009.
21. Prediction of in vivo stability of a resorbable, reconstituted type I collagen membrane by in vitro methods. Ulreich JB, Zuclich G, Lin HB, Li ST. 2000 Society World Biomaterials Congress Transactions, Sixth World Biomaterials Congress Transactions.
22. Evaluation of anorganic bovine bone mineral in post-extraction alveolar sockets: A case series. *Journal of Osseointegration*. March 2010; 1(2).
23. A resorbable, reconstituted type I collagen membrane for guided tissue regeneration and soft tissue augmentation. Yuen D, Junchaya C, Zuclich G, Ulreich JB, Lin HB, Li ST. *Society for Biomaterials*. 2000;1228.
24. Mechanical testing of pericardium for manufacturing prosthetic heart valves. Aguiar P et al. *Interactive CardioVascular and Thoracic Surgery*. 22 (2016) 72-84
25. Heat production by 3 implant drill systems after repeated drilling and sterilization. Chacon GE, Bower DL, Larsen PE, McGlumphy EA, Beck FM. *J Oral Maxillofac Surg*. 2006 Feb;64(2):265-9.

Direct Offices

BioHorizons USA
888-246-8338 or
205-967-7880

BioHorizons Canada
866-468-8338

BioHorizons Spain
+34 91 713 10 84

BioHorizons UK
+44 (0)1344 752560

BioHorizons Chile
+56 (2) 23619519

BioHorizons Italy
800-063-040

BioHorizons Mexico
800-953-0498

Distributors

For contact information in our 90 countries, visit biohorizons.com



BioHorizons®, Laser-Lok®, MinerOss®, AutoTac®, Mem-Lok® and TeethXpress® are registered trademarks of BioHorizons. Unigrip™ is a trademark of Nobel Biocare AB. Zimmer® Dental ScrewVent® and Tapered ScrewVent® are registered trademarks of Zimmer, Inc. AlloDerm™ and AlloDerm GBR™ are trademarks of LifeCell Corporation, an Allergan affiliate. Grafton® DBM is a registered trademark of Medtronic, Inc. Cytoplast® is a registered trademark of Osteogenics Biomedical, Inc. Puros Dermis is a registered trademark of Zimmer Biomet. Mucograft is a registered trademark of Ed. Geistlich Sogne Ag Fur Chemische Industrie. Symbios PerioDerm is a registered trademark of Dentsply Sirona. Hu-Friedy® is a registered trademark of Hu-Friedy Mfg. Co., LLC. Spiralock® is a registered trademark of Spiralock Corporation. Pomalux® is a registered trademark of Westlake Plastics Co. Locator® is a registered trademark of Zest Anchors, Inc. Delrin® is a registered trademark of E.I. du Pont de Nemours and Company. Bio-Gide® is a registered trademark of Edward Geistlich Sohne AG Fur Chemische Industrie. BioMend® is a registered trademark of Zimmer Biomet Dental. IntraSpin®, L-PRF® and Xpression® are trademarks of Intra-Lock® International Inc. Not all products shown or described in this literature are available in all countries. As applicable, BioHorizons products are cleared for sale in the European Union under the EU Medical Device Directive 93/42/EEC and the tissues and cells Directive 2004/23/EC. We are proud to be registered to ISO 13485:2016, the international quality management system standard for medical devices, which supports and maintains our product licences with Health Canada and in other markets around the globe. Original language is English. ©BioHorizons. All Rights Reserved.



ML0203



REV P AUG 2019

shop online at
store.biohorizons.com