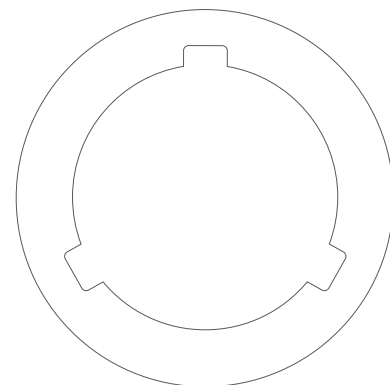


a perfect fit™



# CAMLOG® TITANIUM BASE CAD/CAM BONDING BASE FOR INDIVIDUAL CAD/CAM-FABRICATED DENTAL PROSTHESES

CAMLOG® Titanium base CAD/CAM  
CAMLOG® Bonding aid  
CAMLOG® Modeling aid  
CAMLOG® Scanbody



camlog

# CAMLOG®

## TITANIUM BASE CAD/CAM

### SAFE CONNECTION BETWEEN IMPLANT AND INDIVIDUALLY CAD/CAM-FABRICATED PROSTHETIC RESTORATION

#### CAMLOG® TITANIUM BASE CAD/CAM

The CAMLOG® Titanium base CAD/CAM enables restorations with individual, two-part abutments made from zirconium oxide on CAMLOG® SCREW-LINE Implants. The base is used as a bonding base for individual implant-supported reconstructions such as mesostructures and crown-, bridge- and double crown-restorations.

For simplification of the process flow, a CAMLOG® Abutment screw and a CAMLOG® Bonding aid are included in each packaging.

#### ALL BENEFITS AT A GLANCE

- CAMLOG® Tube-in-Tube™ Implant-abutment connection for a precise, stable and antirotational connection
- Large bonding surface for high stability and reliable adhesion of the bonding
- CAMLOG® Bonding aid and CAMLOG® Abutment screw included
- Unambiguous, fast positioning of the CAMLOG® Titanium base CAD/CAM thanks to the precise abutment guidance in the CAMLOG® Implant



#### CAMLOG® TITANIUM BASE CAD/CAM,

incl. CAMLOG® Abutment screw (Ti6Al4V) and CAMLOG® Bonding aid (POM)

ART. NO.		IMPLANT-Ø	PH
K2244.3348*		3.3 mm 	5.1 mm
K2244.3848		3.8 mm 	5.0 mm
K2244.4348		4.3 mm 	5.0 mm
K2244.5048		5.0 mm 	5.0 mm
K2244.6048		6.0 mm 	5.0 mm

\* only for crown restorations in the region of the upper lateral and lower lateral and central incisors

PH: Prosthetic height (measured from the implant shoulder surface to the occlusal base edge)

## CAMLOG® BONDING AID

Using the CAMLOG® Bonding aid, the CAMLOG® Titanium base CAD/CAM can easily be screwed onto the CAMLOG® Analog by hand. When blasting the titanium base, the CAMLOG® Bonding aid protects the screw channel and avoids flowing of glue into the screw channel. CAMLOG® Bonding aids are available in double packagings in two sizes each with thread M 1.6 for CAMLOG® Abutments with implant diameters 3.3/3.8/4.3 mm and thread M 2.0 for implant diameter 5.0/6.0 mm.

### ALL BENEFITS AT A GLANCE

- Easy screwing of the CAMLOG® Titanium base CAD/CAM to the CAMLOG® Analog without a screw driver
- Protection of the screw channel during blasting
- No flowing of glue into the screw channel

### CAMLOG® BONDING AID, white (2 units, POM)

#### ART. NO.

J4009.1600



#### IMPLANT-Ø

3.3/3.8/4.3 mm



#### THREAD

M 1.6

J4009.2000



5.0/6.0 mm



M 2.0

## CAMLOG® MODELING AID

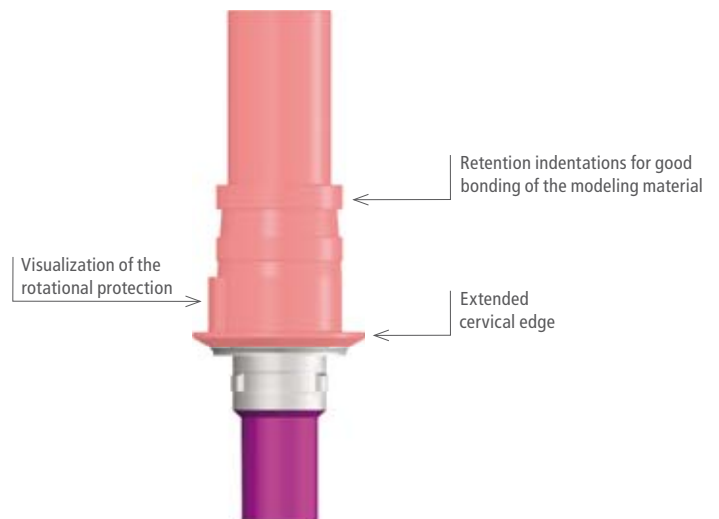
The CAMLOG® Modeling aid helps simplify the fabrication of mesostructures and crown frame works on the CAMLOG® Titanium base CAD/CAM and comes color-coded for implant diameters 3.3/3.8/4.3/5.0/6.0 mm. The CAMLOG® Modeling aid burns residue-free and can be individually shortened.

### PROCESSING OPTIONS

Direct scanning of a wax-up fabricated on a CAMLOG® Modeling aid. Alternatively, the wax-up can be cast into a framework using the casting technique or pressed into a framework using the pressing technique.

### ALL BENEFITS AT A GLANCE

- Simple fabrication of a wax-up for scanning or a casted respectively pressed prosthetic restoration
- Inner configuration provides the optimal bonding space to the titanium base for the casting technique
- Extended design of the cervical edge enables a good modeling
- Retention indentations for good adhesion of the modeling material
- Self-holding on the titanium base



**CAMLOG® MODELING AID\***,  
for CAMLOG® Titanium base CAD/CAM, burn-out (POM)

ART. NO.		IMPLANT-Ø
J2244.3302		3.3 mm 
J2244.3802		3.8 mm 
J2244.4302		4.3 mm 
J2244.5002		5.0 mm 
J2244.6002		6.0 mm 

\* available from summer 2012

## CAMLOG® SCANBODY

### SCAN-TECHNICAL ACQUISITION OF THE CAMLOG® IMPLANT-/LAB ANALOG POSITION

The CAMLOG® Scanbody is used for the optical 3-dimensional intraoral localization of CAMLOG® Implants and of CAMLOG® Lab analogs in the working model. CAMLOG® Scanbodies are available for CAMLOG® Implant diameters 3.3/3.8/4.3/5.0/6.0 mm and are delivered sterile including a CAMLOG® Abutment screw.










### ALL BENEFITS AT A GLANCE

- Unambiguously scannable geometry for precise digital measuring of the implant position
- Sterile scanbody for immediate intraoral application
- High-resistant plastic material for lab-technical multi-use



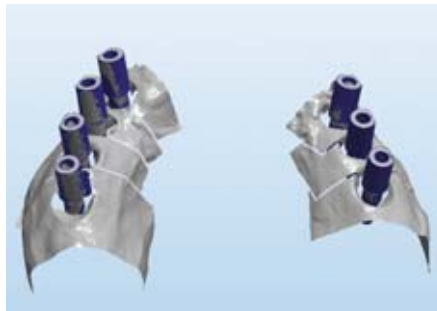
Information about the compatibility of the CAMLOG® Scanbody with suitable CAD/CAM systems, see under [www.camlog.com](http://www.camlog.com).

**CAMLOG® SCANBODY,**  
(PEEK), incl. CAMLOG® Abutment screw (Ti6Al4V), sterile

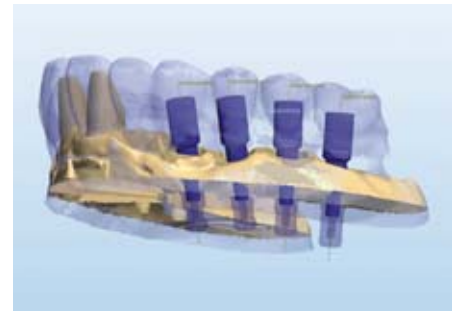
ART. NO.		IMPLANT-Ø
K2610.3310		3.3 mm 
K2610.3810		3.8 mm 
K2610.4310		4.3 mm 
K2610.6010		5.0 mm/6.0 mm  



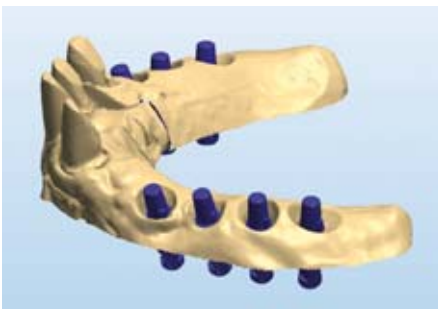
1 Scanbodies screwed into lab analogs



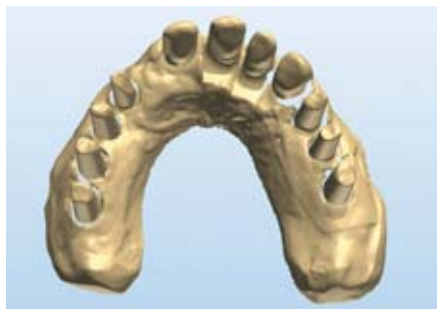
2 Scanbodies digitized on the model



3 Scanbodies with lab analogs in the digitized model incl. wax-up



4 Titanium bases CAD/CAM fixed in lab analogs



5 Modelled mesostructures on titanium bases CAD/CAM



6 Modelled bridge frameworks on mesostructures

More information about CAMLOG® products is available from your local CAMLOG representative.

**HEADQUARTERS**

CAMLOG Biotechnologies AG | Margarethenstrasse 38 | CH-4053 Basel  
info@camlog.com | www.camlog.com

Manufacturer of CAMLOG® and CONELOG® products: ALTATEC GmbH, Maybachstraße 5, D-71299 Wimsheim

**camlog**